

BRIVA®

TASTE IT YOUR WAY

FOOD PROCESSOR POWERCHEF BH-KM176

STAINLESS STEEL
HOUSING

800-1000
WATT

Bowl capacity
AS cup 1.4L
8 CUPS

BPA
FREE ✓
MATERIALS



ART .NR. 50176 » FOOD PROCESSOR POWERCHEF BH-KM176 «

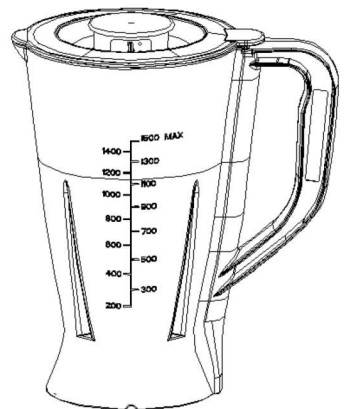
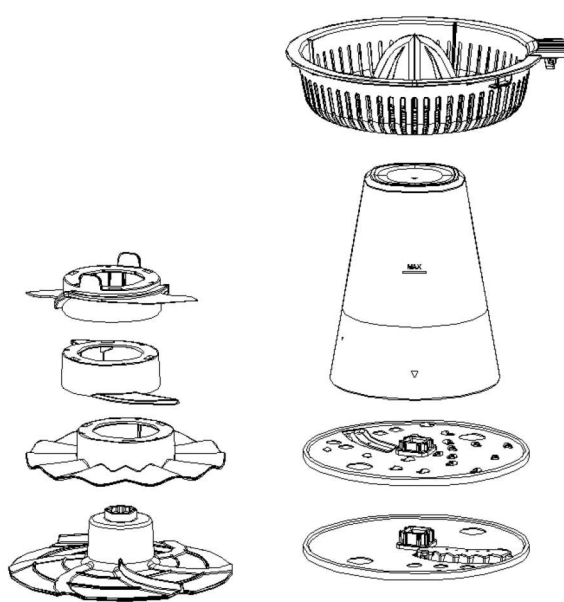
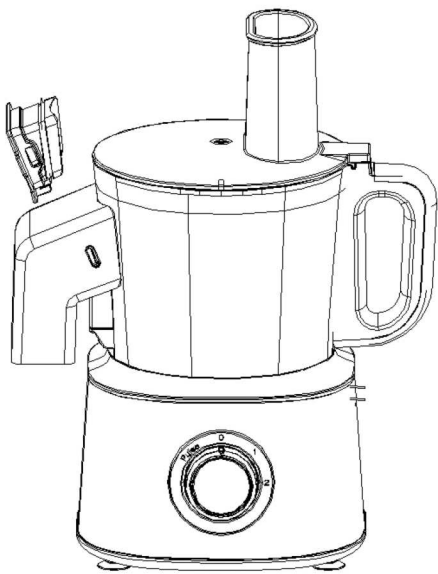


GEBRAUCHSANLEITUNG LESEN UND
BEACHTEN! ANWEISUNGEN BEFOLGEN!

Model- und Zubehöränderungen vorbehalten!

ENGLISH

DEUTSCH



Read this booklet thoroughly before using and save it for future reference

IMPORTANT SAFEGUARDS

Before using the electrical appliance, the following basic precautions should always be followed including the following:

1. Read all instructions, and save it for future reference.
2. Before using, check and ensure that the voltage of wall outlet corresponds to that shown on the rating plate.
3. Do not operate any appliance with a damaged cord or plug or after the appliance malfunctions, or is dropped or damaged in any manner. Bring it to a qualified technician for examination, repair or electrical or mechanical adjustment.
4. Do not let cord hang over edge of table or counter.
5. To protect against risk of electrical shock, do not put the Motor unit into water or other liquid. To disconnect, turn any control to “off”, then remove plug from wall outlet by grasping the plug, not the cord.
6. Close supervision is necessary when any appliance is used by or near children.
7. Keep hands and utensils away from moving blades or discs while processing food to reduce the risk of severe injury to persons or damage to the Food Processor. A scraper or spatula may be used, but must be used only when the Food Processor is not running.
8. Avoid contacting moving parts.
9. Never feed food by hand. Always use food pusher.
10. Before removing the lid from the jar from the motor unit, switch off the unit, wait until the blades have come to a complete stop.
11. Do not use fingers to scrape food away from discharge disc while appliance is operating. Cut type injury may result.
12. Be certain lid is securely locked into place before operating appliance.
13. Be sure to switch off the appliance after each use of your food processor. Make sure the motor stops completely before disassembling.
14. Do not put your fingers or other objects into the unit opening while it is in operation. If food

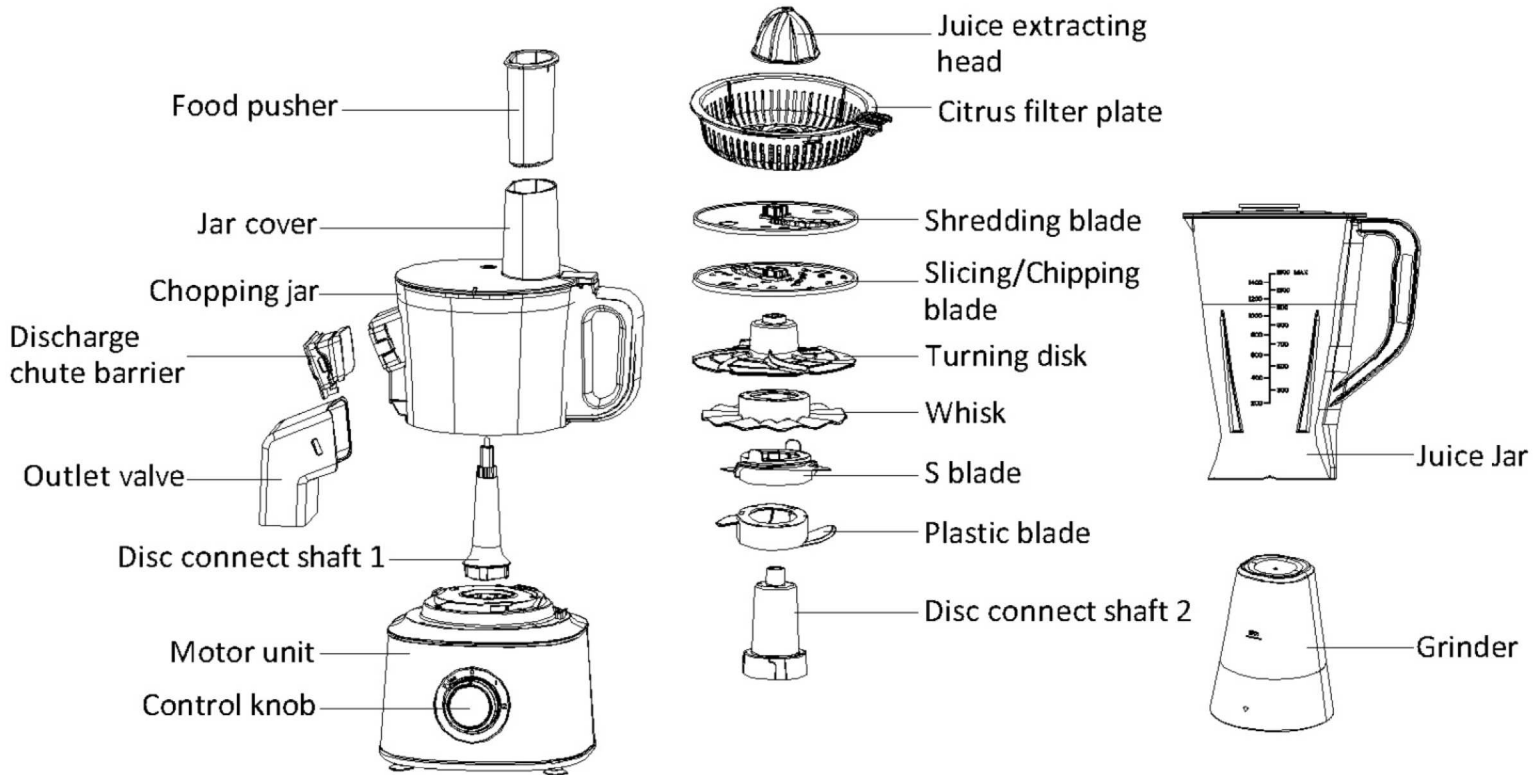
becomes lodged in opening, use food pusher or another piece of fruit or vegetable to push it down. When this method is not possible, turn the motor off and disassemble to remove the remaining food.

15. Do not attempt to defeat the cover interlock mechanism.
16. The metal blades and disk is extremely sharp, handle with care. Always hold the blade assembly by the finger grip or stem, away from the cutting edge, both when handling and cleaning.
17. To reduce the risk of injury, never place processing blade or circle blade ass'y on drive shaft without the processing jar locked properly in place.
18. Do not leave this appliance unattended during use.
19. If this appliance falls or accidentally becomes immersed in water, unplug it immediately. Do not reach into the water! Do not use this appliance after it has fallen into or becomes immersed in water.
20. To reduce the risk of injury to persons or property, never use this appliance in an unstable position.
21. Do not use this appliance for other than its intended use.
22. The use of attachments not recommended or sold by the manufacturer may cause fire, electric shock or injury.
23. Switch off the appliance and disconnect from supply before changing accessories or approaching parts that move in use.
24. Always disconnect the appliance from the supply if it is left unattended and before assembling, disassembling or cleaning.
25. Do not use outdoors.
26. Unplug from outlet when not in use, before putting on or taking off parts, and before cleaning.
27. If the supply cord is damaged, it must be replaced by the manufacturer, its service agent or similarly qualified persons in order to avoid a hazard.
28. **Caution:** never immerse in water, unplug before inserting or removing parts.
29. **CAUTION: DO NOT OPEN LID UNTIL BLADES STOP.**
30. Appliances can be used by persons with reduced physical, sensory or mental capabilities or lack of experience and knowledge if they have been given supervision or instruction concerning use of the appliance in a safe way and if they understand the hazards involved. Children shall not play with the appliance.
31. This appliance shall not be used by children. Keep the appliance and its cord out of reach of

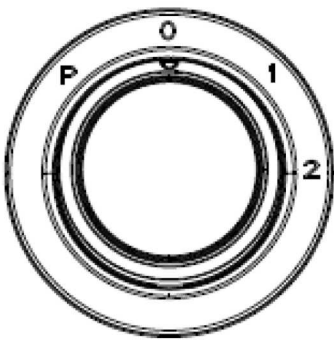
children.

32. Save these instructions.

KNOW YOUR FOOD PROCESSOR



CONTROL KNOB



P = Pulse speed

0 = Off

1 = Low speed

2 = High speed

BEFORE USING YOUR FOOD PROCESSOR

Before first use, carefully unpack the food processor and its attachments and remove any package material or label or stickers. Clean all the parts except the Motor unit following the instructions in CLEANING AND MAINTENANCE. Handle the “S” blade or shredding blade、 slicing/chipping blade with extreme care as they are sharp. The food processor can be used for kneading, beating and whisking, chopping the meat or vegetable and fruit, shredding, slicing and chipping the vegetables or potatoes, blending the smooth soup, sauces, creams, fruit purees, milk and so on, using different accessory to perform different task.

BLENDING

1. Place the Juice jar on the Motor Unit from the unlock position and slightly turn the Juice jar clockwise until the Juice jar locks into the lock position on the Motor unit. If the Juice jar is not or is badly positioned, the blender will not work.
2. Peeled or cored the fruit or vegetables and then cut it into small dices, put the food piece into the Juice jar. Usually certain amount of purified water has to be added to facilitate the smooth running of appliance. The amount of mixture should not exceed the max level as indicated on the Juice jar.

Note: Never use boiling liquids or run the appliance empty. And the Juice jar can not be used for blending meat.

3. Replace the Juice Jar Cover on the Juice jar and ensure that the Juice Jar Cover can fix with the jar securely.
4. You may add ingredient into the Juice jar through the center opening of Juice Jar Cover during operation, then replace Measuring Cup if necessary. Let the tabs of Measuring Cup align with the grooves of Top Cover, put down and turn it clockwise by 90°to lock it in place, when disassembling, turn the measuring cup in anti-clockwise by 90°to unlock it.
5. Connect the plug to wall outlet and set Control knob to your desired speed. There are four setting: P, 0, 1, 2. The 1 setting is the low speed, the 2 setting is the high speed. Turn the selector to P position and hold it to pulse actuate motor for delicate chopping. Release it to return the 0 position. The Pulse mode allows you to create a burst of power for quick, efficient blending.
6. Turn the Control knob to 0 Position once the mixture has been blended to your desired consistency.



7. Remove the Juice jar from the Motor Unit (turning the jar anti-clockwise), carefully take down the Juice Jar Cover, then pour and serve.
8. Cut the carrot into small pieces of 1.5cm*1.5cm*1.5cm . Add 600g of carrot and 900g water to the juice cup . The maximum operation time per cycle shall not exceed 120 seconds and minimum of 2 minutes rest time must be maintained between two consecutive cycles. At least 30 minutes rest time must be maintained to let the appliance cool down after three operation cycles.

CLEANING

1. Disconnect the power supply before cleaning.
2. Pour a little warm water into the Juice jar, turn and hold the Control knob to P position for a few seconds.
3. Remove the Juice jar and rinse under running water. Remove Juice Jar cover and measuring cup, then immerse the top cover, measuring cup in water and clean them with a soft brush, finally clean them with damp cloth.

Caution: The blade can be disassembled for cleaning.

4. Wipe the outside of motor unit with a damp cloth. Never immerse it in water as electric shock is possible to occur. Then dry thoroughly. Ensure the interlock area is free of food particles.

CHOPPING

1. Firstly assemble the Disc connect shaft1 into the motor unit, make sure it is clipped into position.
2. Place the chopping jar on the Motor Unit from the unlock position and slightly turn the chopping jar clockwise until the chopping jar locks into the lock position on the Motor unit. Make sure it is assembled in place correctly, otherwise the appliance will not operate.
3. Insert the “S” blade into the Disc connect shaft2 in the chopping jar securely. Make sure it is locked into position.
4. Then place the prepared chopping food into the chopping jar. The food must be cut into small size firstly (such as 2cm*2cm*6cm for beef). During chopping, you can add food through the feeding funnel with the pusher, never using food or finger to push the food into the feeding funnel.



5. Place the jar cover onto the chopping jar and turn it clockwise until the tab of the jar cover clicks into slot in the chopping jar handle. Make sure it is locked in position correctly, otherwise the appliance will not operate.
6. Connect the appliance to power supply and set Control knob to your desired speed.
7. There are four setting: P, 0, 1, 2. The 1 setting is the low speed, the 2 setting is the high speed. Turn the selector to P position and hold it to pulse actuate motor for delicate chopping. Release it to return the 0 position. The Pulse mode allows you to create a burst of power for quick, efficient blending.

Hard substance: cheese, dried fruits, and certain vegetables (carrots, celery...),

Soft substance: certain vegetables (onions, spinach...)

Raw and cooked meat (boned and sliced)

Syrup: Freeze 450g honey to 2-6°C and 50g white granulated, Put it into the mixing cup, start the main engine, stirring at maximum speed, The total operating time should not be more than 5sec.

CAUTION: The maximum operation time per cycle shall not exceed 30 seconds and minimum of 2 minutes rest time must be maintained between two consecutive cycles. At least 30 minutes rest time must be maintained to let the appliance cool down after three operation cycles.. You can chop up to 400g of following foodstuff.

9. Turn the Control knob to “0” position and unplug the appliance after chopping. Open the jar cover and grasp blade by its hub and remove. Unlock chopping jar by turning it in anti-clockwise away from Motor unit, and lift it off. Empty the processed food.

CAUTION: The “S” blade is extremely sharp, handle with care.

CLEANING

1. Disconnect the power supply before cleaning.
2. Empty the chopping jar, dismantle all detachable parts and rinse them in warm soapy water. Extreme caution must be taken when handling blade as it is very sharp. All the accessories except Motor unit are dishwasher safe components, but the temperature setting shall not exceed 70°C. Then dry thoroughly.
3. Wipe the outside of motor unit with damp cloth. Never immerse it in water as electric shock is possible to occur. Then dry thoroughly. Ensure the interlock area is free of food particles.

FOR A QUICK WASH UP

Between processing tasks, pour in some water into the chopping jar, turn and hold the Control knob to P position a few seconds for quick cleaning.

KNEADING/MIXING

1. Firstly assemble the Disc connect shaft1 into the Motor unit, make sure it is clipped into position.
2. Place the chopping jar on the Motor Unit from the unlock position and slightly turn the chopping jar clockwise until the chopping jar locks into the lock position on the Motor unit. Make sure it is assembled in place correctly, otherwise the appliance will not operate.
3. Insert the plastic blade into the Disc connect shaft2 in the jar securely.
4. Measure the flour with food pusher and put them into the jar. The maximum quantity of flour is **375g**.
5. Place the jar cover onto the chopping jar and turn it clockwise until the tab of the jar cover clicks into slot in the jar handle. Make sure it is locked in position correctly, otherwise the appliance will not operate.
6. Insert the food pusher into the feeding funnel.
7. Add one tablespoon oil into the appliance from feeding funnel. Connect the appliance to power supply. Turn the Control knob to the “2” setting.
8. Then add water (the maximum water quantity is 225g) with food pusher from the feeding funnel slowly within 20s.

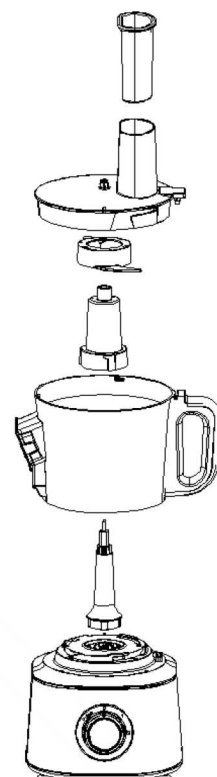
NOTE: The food pusher also can be used as measuring cup for measuring oil or water.

9. The proportion of the flour and water is 5:3. flour and water shall not exceed **600g**. Make sure the quantity of the water shall not be more than the maximum specified water quantity.

Note: Add some more water if the processing speed slows down during operating so as to make the motor run smoothly, otherwise the motor may be damaged. During kneading/mixing, to avoid shaking, press the jar cover with one hand, and the other hand is holding the handle.

10. Stop the process by turning the Control knob to “0” position as soon as the pastry starts to form a ball.

CAUTION: The total operation time is not more than 60 seconds. And minimum 2 minutes rest period must be maintained after one operation cycle. At least 30 minutes rest period must be maintained to let the appliance cool down after three operation cycles.



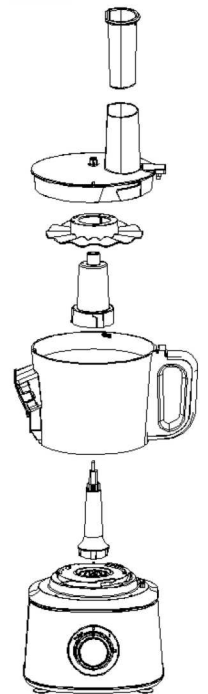
11. Unplug the appliance, detach the cover, firstly remove the plastic blade, then remove the dough.

CLEANING

1. Disconnect the power supply before cleaning.
2. Empty the chopping jar and remove the jar cover, the plastic blade, food pusher, then immerse them in water and clean them with a damp cloth or soft brush.
3. Wipe the outside of motor unit with a damp cloth. Never immerse the Motor unit in water as electric shock is possible to occur. Then dry thoroughly. Ensure the interlock area is free of food particles.

BEATING AND WHISKING

1. Firstly assemble the Disc connect shaft1 into the Motor unit, make sure it is clipped into position.
2. Place the chopping jar on the Motor Unit from the unlock position and slightly turn the chopping jar clockwise until the chopping jar locks into the lock position on the Motor unit. Make sure it is assembled in place correctly, otherwise the appliance will not operate.
3. Insert the whisk into the Disc connect shaft2 in the jar securely.
4. Place the ingredient into the bowl. You can use it to prepare egg whites (up to 3 egg whites).
5. Place the jar cover onto the chopping jar and turn it clockwise until the tab of the jar cover clicks into slot in the jar handle. Make sure it is locked in position correctly, otherwise the appliance will not operate.
6. Set the Control knob to the high speed.



Note: Never use this whisk to knead dough or mix cake mixtures.

7. The maximum operation time per cycle shall not exceed 120 seconds and minimum of 2 minutes rest time must be maintained between two consecutive cycles. At least 30 minutes rest time must be maintained to let the appliance cool down after three operation cycles.

CLEANING

1. Disconnect the power supply before cleaning.
2. Empty the chopping jar and remove the jar cover, the whisk, food pusher, then immerse them

in water and clean them with a damp cloth or soft brush.

3. Wipe the outside of motor unit with a damp cloth. Never immerse the Motor unit in water as electric shock is possible to occur. Then dry thoroughly. Ensure the interlock area is free of food particles.

SLICING/CHIPPING/SHREDDING

1. Firstly assemble the Disc connect shaft1 into the Motor unit, make sure it is clipped into position.

2. Place the chopping jar on the Motor Unit from the unlock position and slightly turn the chopping jar clockwise until the chopping jar locks into the lock position on the Motor unit. Make sure it is assembled in place correctly, otherwise the appliance will not operate.

3. Fit the shredding blade or slicing/chipping blade into the chopping jar.

4. Place the jar cover onto the chopping jar and turn it clockwise until the tab of the jar cover clicks into slot in the jar handle. Make sure it is locked in position correctly, otherwise the appliance will not operate.

5. Turn the Control knob to 1 or 2 setting to start.

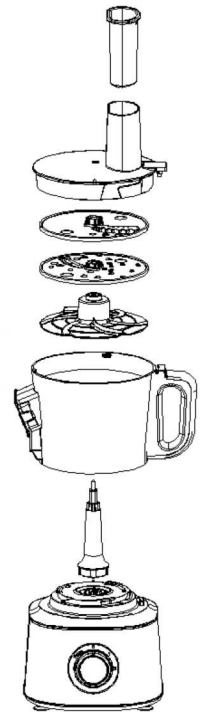
Note: The shredding/slicing/chipping disks can slice thickly-potatoes, onions, thinly-cucumbers, boot root, apples, and carrots...

5. Use the food pusher to feed food into the feeding funnel. The food shall be cut into proper size to suitable for the feeding funnel. You can slice/chip up to 500g of food.

6. The maximum operation time per cycle shall not exceed 60 seconds and minimum of 2 minutes rest time must be maintained between two consecutive cycles. At least 30 minutes rest time must be maintained to let the appliance cool down after three operation cycles.

minutes rest period must be maintained to let the appliance cool down after three operation cycles.

7. Turn the Control knob to “0” position and unplug unit after processing. Remove the blade

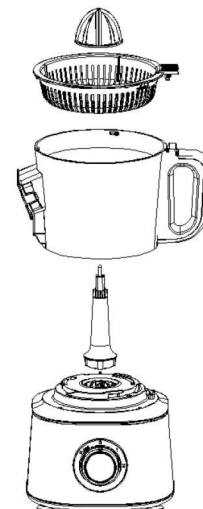


ass'y. Unlock jar by turning it in anti-clockwise away from its base, and lift it off. Empty the processed food.

CAUTION: The blade is extremely sharp, handle with care.

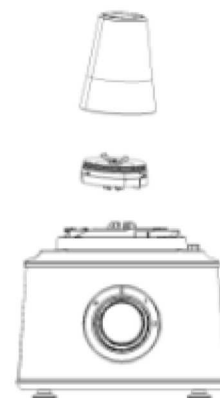
Citrus juicer

- (a) Place the chopping jar on the Motor unit and turn it clockwise until it locks into position. Make sure it is assembled in position correctly, otherwise the appliance will not operate.
- (b) Fit the Citrus filter plate into the chopping jar, then turning it clockwise until it clicks into place. Only the Citrus filter plate are assembled in position correctly, the appliance will operate once turn on the Control knob.
- (c) Then fit the corresponding Juice extracting head cone on the Citrus filter.
- (d) Place half a citrus fruit onto the Juice extracting head.
- (e) Set the Control knob to 1 to start the appliance. Then the extracted juice will flow through the filter, the roughness flesh and pith will be remained on the filter. But the smooth juice will flow into the chopping jar.
- (f) The maximum operation time per cycle shall not exceed 120 seconds and minimum of 2 minutes rest time must be maintained between two consecutive cycles. At least 30 minutes rest time must be maintained to let the appliance cool down after three operation cycles.



GRINDING FUNCTION

1. Place the motor unit on the flat surface. Make sure the power outlet is unplugged.
2. Place the grinding cup on a flat surface with the open ending facing up. Fill the cup with your favorite ingredients (eg. coffee bean). Be sure not to fill ingredients exceed the MAX mark, the max capacity is 100g.
3. Assemble the cup base onto the opening end of the cup by turning it in clockwise.
4. Upend the assembly of cup and cup base, and insert them into the motor unit, make sure arrow on the motor unit align with the cup base, then turn the cup base in clockwise to lock them.
5. Connect the plug to wall outlet and turn the Control knob to the desired setting. The setting 1 is the lowest speed and the setting 2 is the highest speed.



NOTE: The maximum operation time per cycle shall not exceed 30 seconds and minimum of 2 minutes rest time must be maintained between two consecutive cycles. At least 30 minutes rest time must be maintained to let the appliance cool down after three operation cycles.

6. When the operation is finished, unplug the power outlet. Then turn the cup in anti-clockwise to remove them.

7. Upend the cup assembly, hand the cup with one hand, and turning the cup base in anti-clockwise with the other hand to remove it.

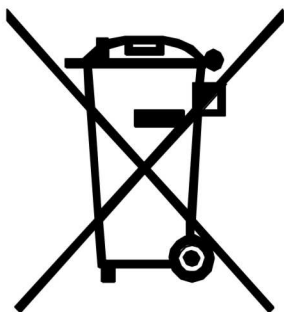
CLEANING AND MAINTENANCE

- Before you clean the appliance, unplug it.
- Disassemble the appliance. Make sure that the cutting edges of the blades do not come into contact with hard objects. This may cause the blade to get blunt. The cutting blades are sharp. Be careful when you do the cleaning.
- Clean the main unit with a moist cloth. Never immerse it in water as electric shock is possible to occur. Then dry thoroughly. Ensure the interlock area is free of food particles.
- Clean the other parts in soapy water ($<60^{\circ}\text{C}$). Rinse and dry.
- Except the main unit, all the other parts can be cleaned in dishwasher with water temperature less than 60°C and wash time no more than 45 minutes.
- Store the product in a dry place.

Note:

- Some food may discolor the disc (for slicing/chipping/shredding). This is normal and will not harm the plastic or effect the flavor of food. Rub with cloth dipped with vegetable oil to remove discoloration.
- For quick cleaning after processing tasks of chopping / blending, you can pour some water into the food processor jar / blender jar, and then turn and hold the control knob to position “P” for a few seconds.

ENVIRONMENT FRIENDLY DISPOSAL



You can help protect the environment!

Please remember to respect the local regulations:
hand in the non-working electrical equipments to an
appropriate waste disposal center.

BRIVA®

TASTE IT YOUR WAY

BRIVA HAUS GmbH

Beedstraße 54
40468 Düsseldorf
Deutschland

Telefon +49 211 385 39977
Info@briva-haus.de
briva-haus.de